

A R R I V I N G

W A I T I N G

W O R K I N G

M E E T I N G

T H I N K I N G

Q U I E T I N G

L O O K I N G

infiniti

Furniture, signage and graphics for interiors projects.



Who are Infiniti?

Based in Glasgow, Infiniti source, supply and install furniture, seating, acoustic products and accessories for a wide range of commercial interiors projects such as: offices, bars, cafes, restaurants, attractions, venues, hotels and student accommodation throughout the U.K.

We deal directly with some of the best manufacturers of good quality, well designed, innovative commercial furniture products from the U.K. and Europe.

We work in collaboration with architects, designers, asset managers, project managers, contractors, surveyors and end clients to create amazing spaces.

Our knowledge, expertise and budget planning brings the right balance of quality, value and design of products and finishes to each individual project.

In addition we design and install graphics for signage, way finding, glass manifestations and wall art.

We have a real passion for the people we work with, the projects we work on, the products we supply and the results we achieve which you can see in the following pages.

ARRIVING

OLA

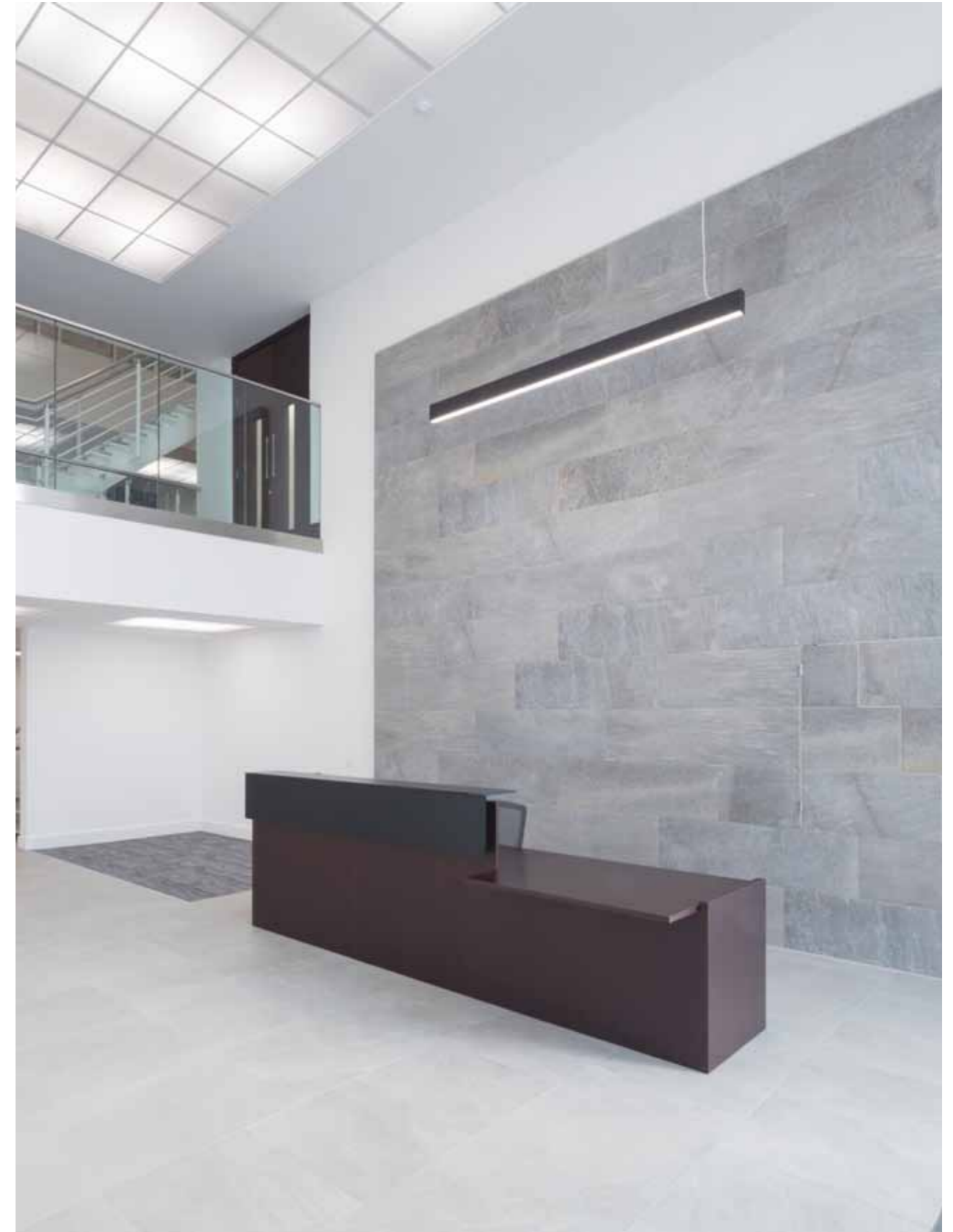
Glasgow



Project: New office
Client: Opfer Logan Architects
Products: Reception, office & boardroom furniture

Atlantic Quay 3

Glasgow

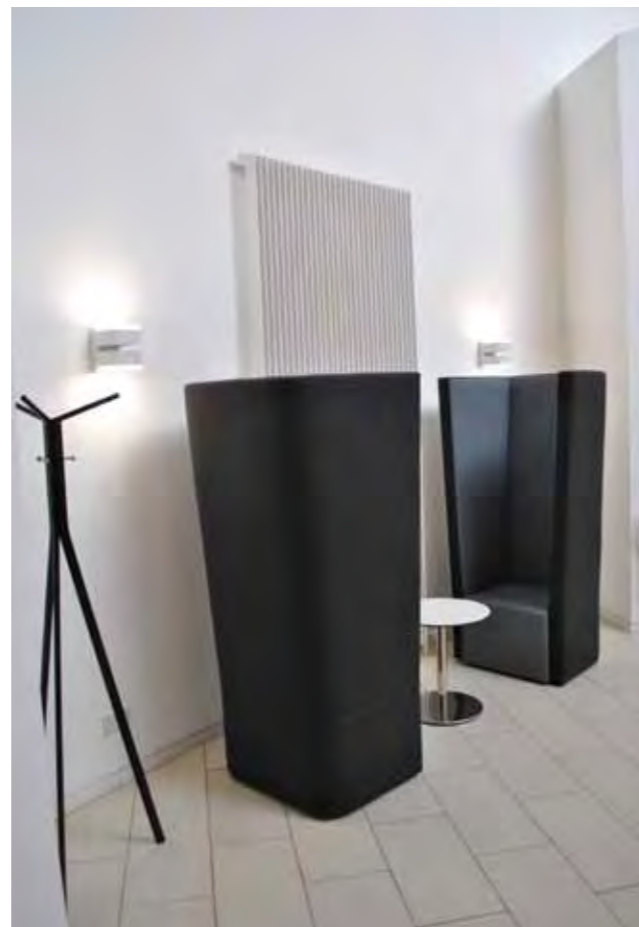


Project: New reception
Architect: Ingram Architecture & Design
Products: Reception desk

WAITING

Davidson House

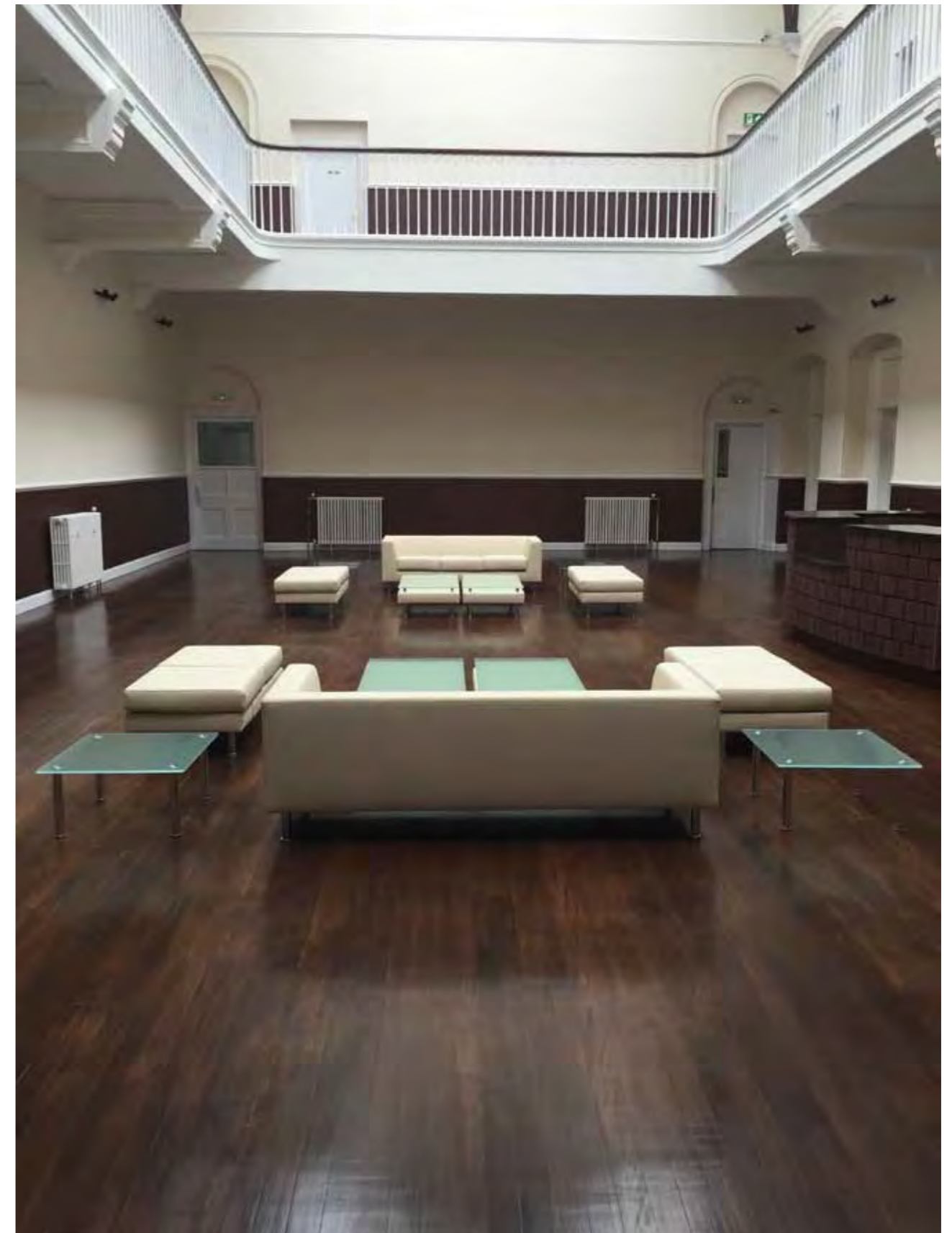
Aberdeen



Project: New reception & breakout spaces
Architect: Ingram Architecture & Design
Products: Reception desk, soft seating, cafe furniture, booths, graphics & signage

Bellahouston Business Centre

Glasgow



Project: Atrium space
Client: The Rasul Group
Products: Soft seating

Mentholatum

East Kilbride



Project: Refurbished offices
Project Manager: Ailsa TH
Products: Reception, soft seating, desks, task chairs, meeting rooms

Atlantic Quay 1

Glasgow



Project: New atrium space
Architect: Ingram Architecture & Design
Products: Reception desk, soft seating, booth, stools & rugs

WORKING



Ferguson Marine

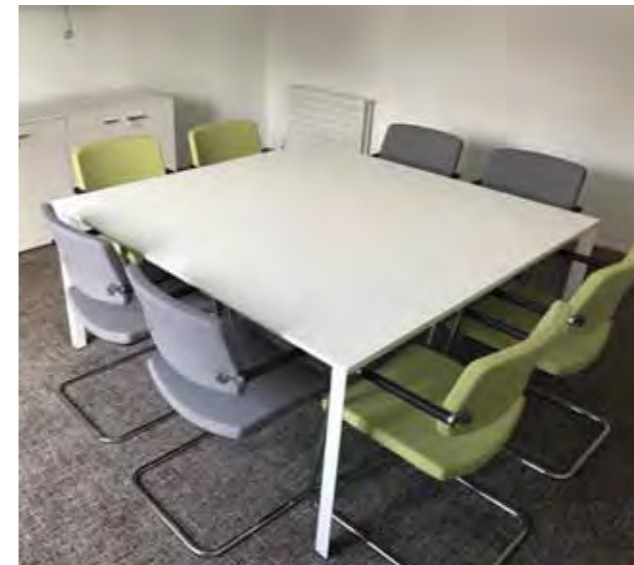
Port Glasgow



Project: New offices
Developer: Sunax Design & Build
Products: Desks, task chairs, storage, monitor arms, meeting rooms, waiting areas & reception desk

Prince and Princess of Wales Hospice

Glasgow



Project: New hospice offices & meeting rooms
Architect: Ryder
Products: Desks, task chairs, storage, lecterns, coat stands, writing boards, meeting tables & chairs

Stena Line

Glasgow



Project: New office
Client: Stena Line
Product: Desks, task chairs, staff areas, soft seating, meeting rooms & acoustic panels

The Wigley Group

Warwickshire



Project: New offices
Architect: Threesixty Architecture
Products: Reception desk, desks, task chairs, lectern, conference, boardroom, breakout & meeting furniture

Dem-Master

Bathgate



Project: New office & boardroom
Client: Dem-Master
Products: Boardroom furniture, desks, task chairs, storage, monitor arms

Turbine Services

Glasgow



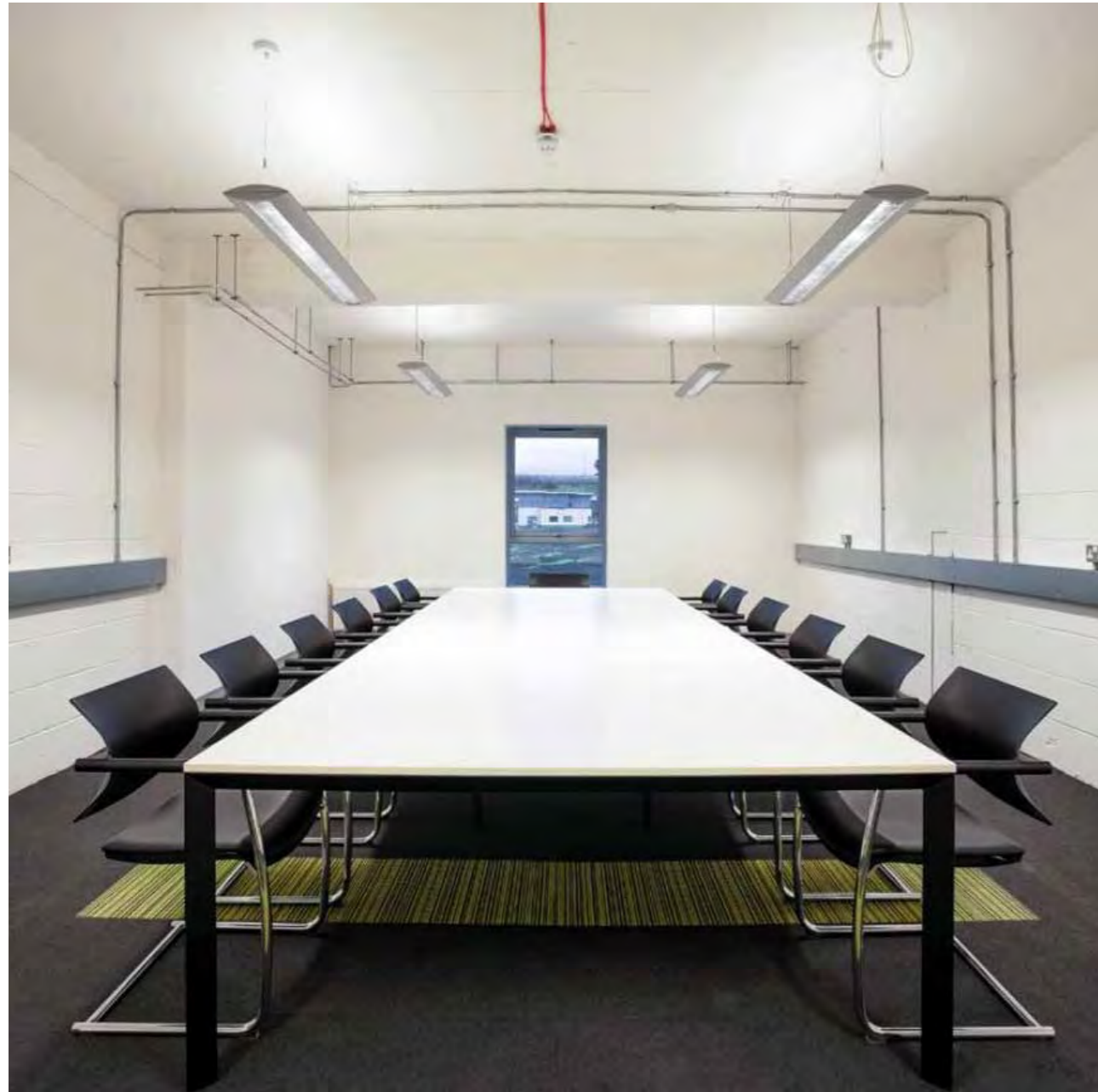
Project: New offices
Architect: Ingram Architecture & Design
Products: Desks, task chairs, partitions, meeting rooms, storage



MEETING

The Whisky Bond

Glasgow



Project: Boardroom
Client: TWB
Products: Boardroom table, chairs & storage

Threesixty Architecture

Glasgow



Project: New offices
Client: Threesixty Architecture
Products: Desks, storage, task chairs, boardroom seating, breakout furniture

Startline Motor Finance

Glasgow



Project: Reception, kitchen & board room
Client: Startline Motor Finance
Products: Reception desk, soft seating, cafe furniture, board room table & chairs, credenzas & wall graphics

Ferguson Marine

Port Glasgow



Project: Boardroom
Client: Sunax Design & Build
Products: Board room table, chairs, soft seating, lamps, trolleys

Robinson Low Francis

Glasgow



Enercon

Edinburgh



Project: New Office
Client: RLF
Products: Storage, desks, monitor arms, power, board room and breakout spaces

Project: Staff dining
Client: Enercon
Products: Tables & chairs

THINKING



WSP Parsons Brinkerhoff

Glasgow



Project: New office
Designer: Idaco
Products: Reception desk, soft seating, meeting rooms, cafe furniture & acoustic screens

CBRE

Glasgow



Project: New breakout space & lockers
Client: CBRE
Products: Soft seating, lamps, meeting chairs, tables, stools, workbench, lockers & recycling units

Innovation Centre

Aberdeen



Project: Atrium space
Architect: Ingram Architecture & Design
Products: Breakout & meeting furniture

Be Commercial

Glasgow



Project: New office
Client: Be Commercial
Products: Desks, meeting room chairs, soft seating



QUIETING

Kettock Lodge

Aberdeen



Project: Atrium space
Architect: Ingram Architecture & Design
Products: Acoustic panels & feature lighting

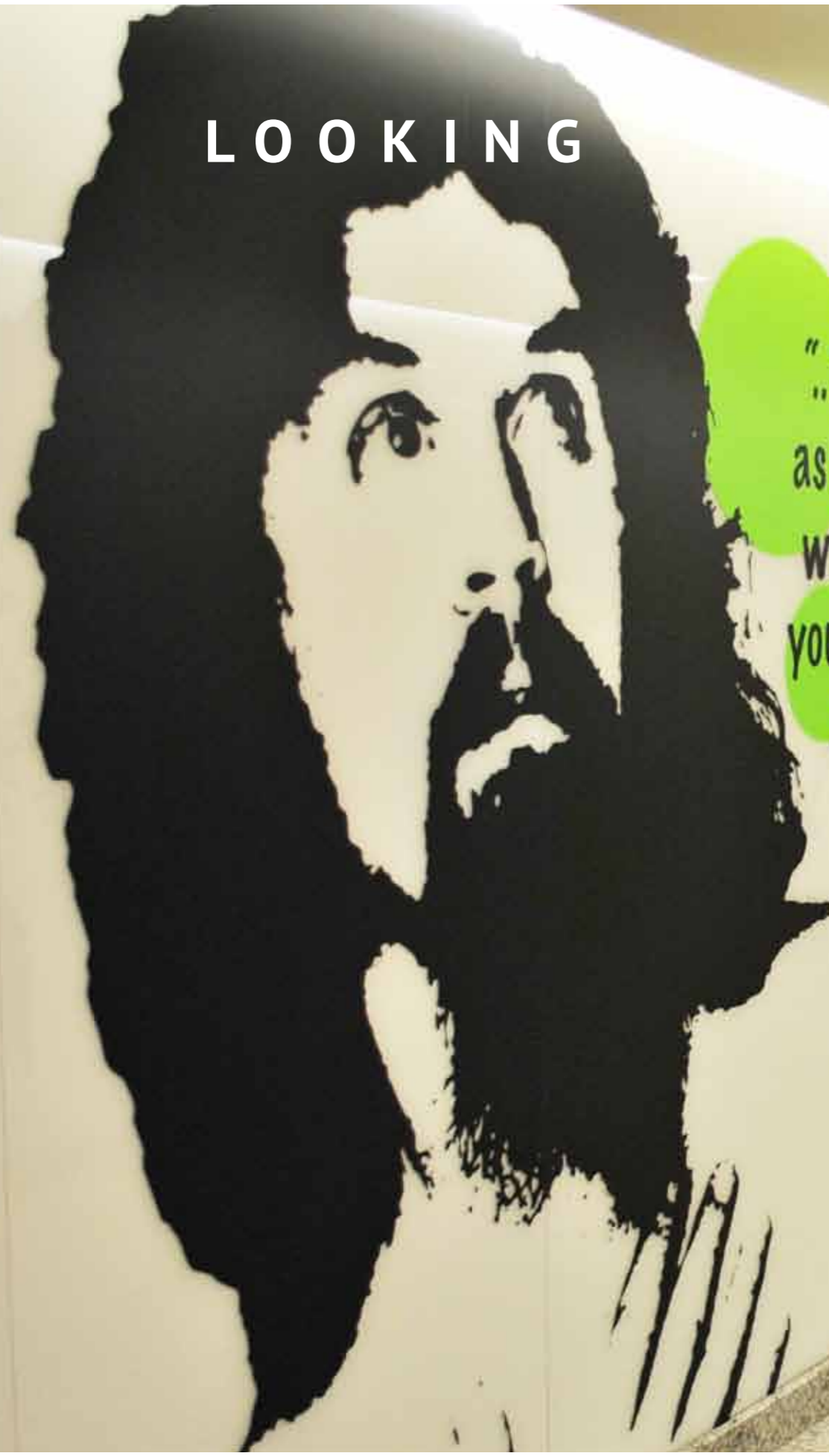
West Dunbartonshire Council

Dumbarton



Project: New HQ
Architect: Keppie Design
Product: Acoustic panels

LOOKING



"...There's no such thing as bad weather, just the wrong clothing, so get yourself a sexy raincoat and live a little..."

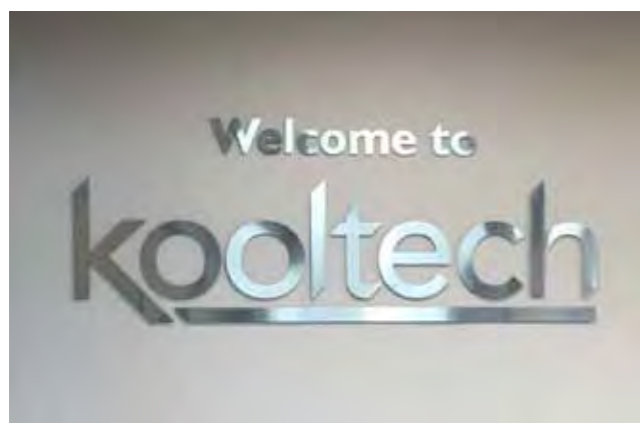
Billy Connolly
(Comedian)

"...Rab!
I wish I'd never been married..."
Blair C. Smith



Kooltech

Glasgow



Project: New HQ
Client: Kooltech
Project: Graphics, signage, desks, chairs, storage, lockers, soft seating, meeting room furniture

Cafe Create

Glasgow



Project: New cafe
Architect: Ingram Architecture & Design
Products: Graphics, tables, chairs & feature lighting

Squarestone Hub

Edinburgh



Project: Office feature
Client: Squarestone Hub
Project: Design, manufacture & supply graphics, waiting area furniture

Skypark 5

Glasgow



Project: Graphics & signage
Client: Skypark
Project: Design, supply and install tenant directory, exterior & interior graphics

KEY PARTNERS

SINETICA

dieffebi

boss
design

.mdd

TONON

DAUPHIN
HumanDesign® Group

FREZZA®

PEDRALI
THE ITALIAN ESSENCE

modus

Fonology
sound architecture

abstracta

verco.

ARESLINE
INNOVATIVE SEATING SYSTEMS

LINTEX

 **colebrook bosson saunders**

 **LUXY**®

OFFECCT


WILLIAM HANDS
WILLIAM HANDS
WILLIAM HANDS

kastel

DeVorm

profim

cantarutti

maxdesign


sixteen3

“The details
are not the
details they
make the
design”

Charles Eames

infiniti

Skypark 1
8 Elliot Place
Glasgow
G3 8EP

www.infinitiltd.co.uk 0141 218 4605